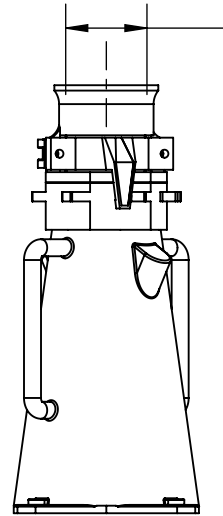
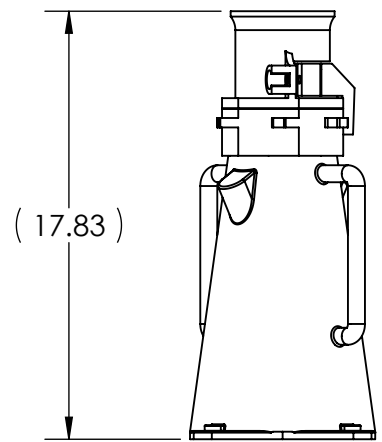
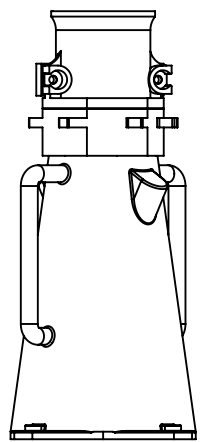
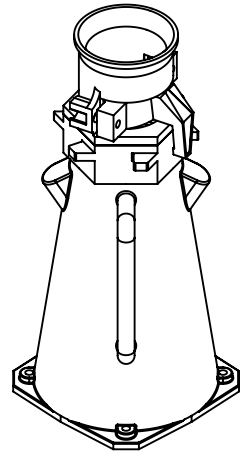
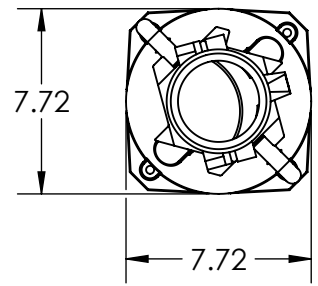
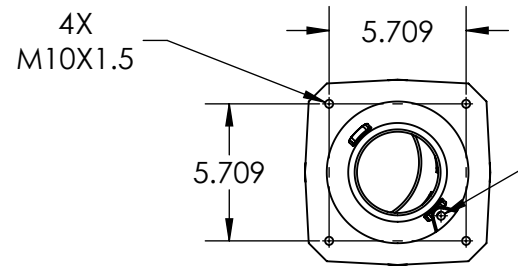


This drawing is the property of MELTRIC Corporation, Franklin (Milwaukee), Wisconsin, USA. Any unauthorized copying of this drawing by any means, ENG/RD/06 REV: 20 ISSUED DATE: 1/15/11 or disclosure of its contents to any person not authorized by MELTRIC Corporation or its agents to receive it, is strictly prohibited.

G | F | E | D | C | B | A



[86mm]
 \varnothing 3.39in
 MAXIMUM CABLE
 BUNDLE DIA.



M10X1.5
 GROUND SCREW
 HOLE

PART NUMBER	CABLE RANGE
47-3A013-200	2.000" - 2.125"
47-3A013-225	2.125" - 2.250"
47-3A013-237	2.250" - 2.375"
47-3A013-250	2.375" - 2.500"
47-3A013-275	2.500" - 2.750"
47-3A013-300	2.750" - 3.000"
47-3A013-312	3.000" - 3.125"
47-3A013-335	3.125" - 3.350"
47-3A013-350	3.350" - 3.390"

APPROX WEIGHT = 10 LBS.

TOLERANCES UNLESS OTHERWISE SPECIFIED		ENGLISH
MACHINED SURFACES $\sqrt[125]{\text{MAX}}$		
GROUND SURFACES $\sqrt[32]{\text{MAX}}$		0.XX ±0.01
ANGLE TOLERANCE ±1°		0.XXX ±0.005
REMOVE BURRS & SHARP EDGES TO .015 MAX.		
DIMENSIONS SHOWN IN OVALS ARE INSPECTION DIMENSIONS.		

		DRAWING TITLE:	
DRAWN	APPROVED	PFQ300 METAL STRAIGHT HANDLE	
DATE:	SCALE	MATERIAL:	
	NTS	METAL	
SHEET:	PART NUMBER		REVISION
1 OF 1	47-3A013-xxx		