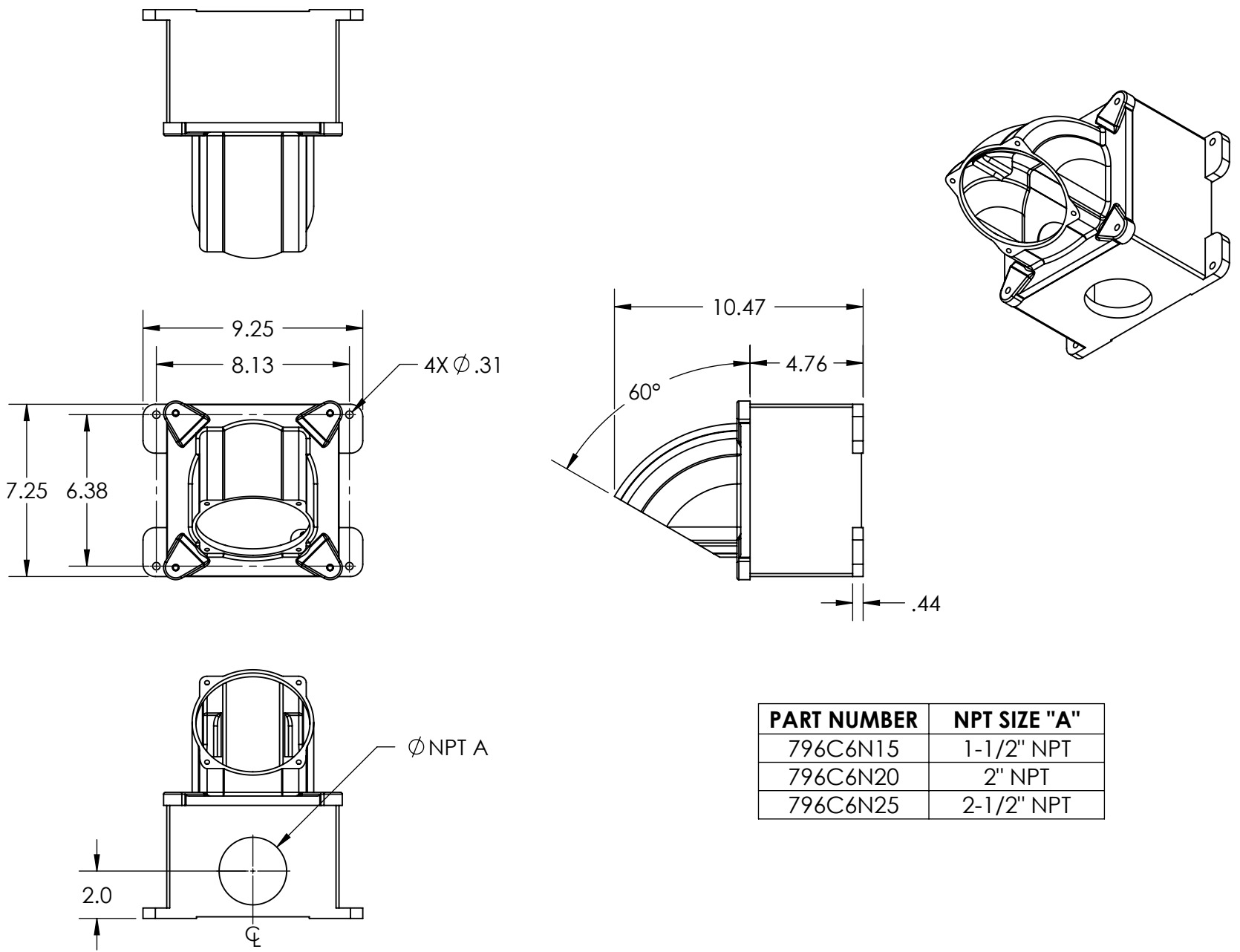


This drawing is the property of MELTRIC Corporation, Franklin (Milwaukee) Wisconsin, USA. Any unauthorized copying of this drawing by any means, ENG/RD/06 REV: 20 ISSUED DATE: 1/15/11 or disclosure of its contents to any person not authorized by MELTRIC Corporation or its agents to receive it, is strictly prohibited.



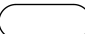
PART NUMBER	NPT SIZE "A"
796C6N15	1-1/2" NPT
796C6N20	2" NPT
796C6N25	2-1/2" NPT

TOLERANCES UNLESS OTHERWISE SPECIFIED

MACHINED SURFACES #error: broken link
GROUND SURFACES #error: broken link
ANGLE TOLERANCE $\pm 1^\circ$
REMOVE BURRS & SHARP EDGES TO .015 MAX.

ENGLISH

0.X ± 0.05
0.XX ± 0.01
0.XXX ± 0.005

 DIMENSIONS SHOWN IN OVALS ARE INSPECTION DIMENSIONS.

MELTRIC
A COMPANY OF MARÉCHAL ÉLECTRIC

DRAWN	APPROVED	DRAWING TITLE:	
DATE:		SCALE	MATERIAL:
SHEET:		NTS	PAINTED METAL
1 OF 1		PART NUMBER	REVISION
		796C6Nxx	

METAL BOX/METAL ANGLE COMBO