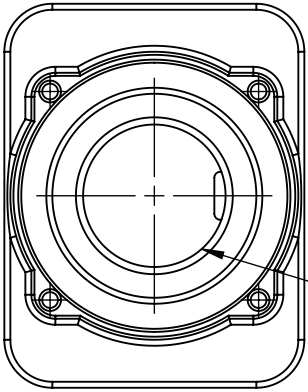


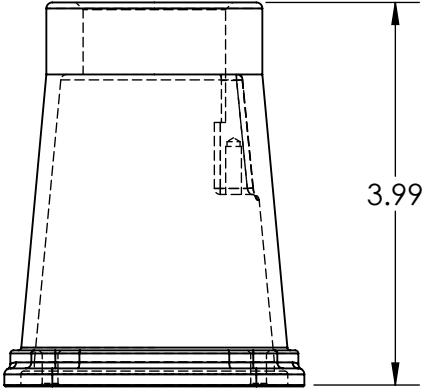
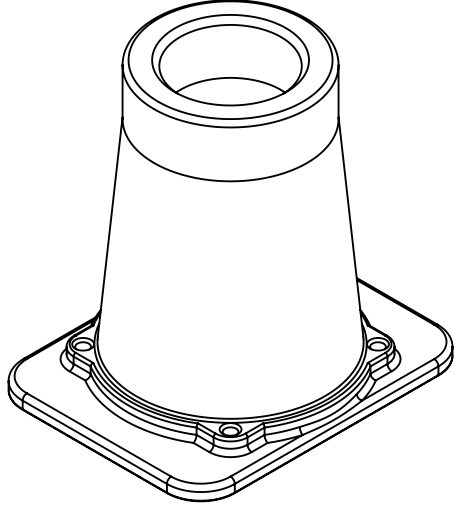
This drawing is the property of MELTRIC Corporation, Franklin (Milwaukee), Wisconsin, USA. Any unauthorized copying of this drawing by any means, ENG/RD/06 REV: 20 ISSUED DATE: 1/15/11 or disclosure of its contents to any person not authorized by MELTRIC Corporation or its agents to receive it, is strictly prohibited.

G                      F                      E                      D                      C                      B                      A

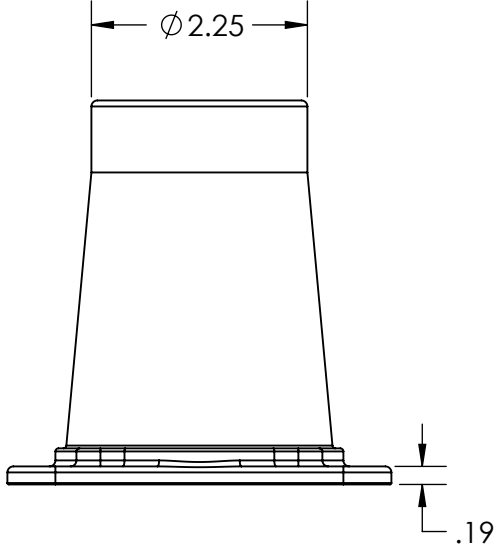


NPT "A"

PART NUMBER	NPT A
7X3PON07	3/4" NPT
7X3PON10	1" NPT
7X3PON12	1-1/4" NPT

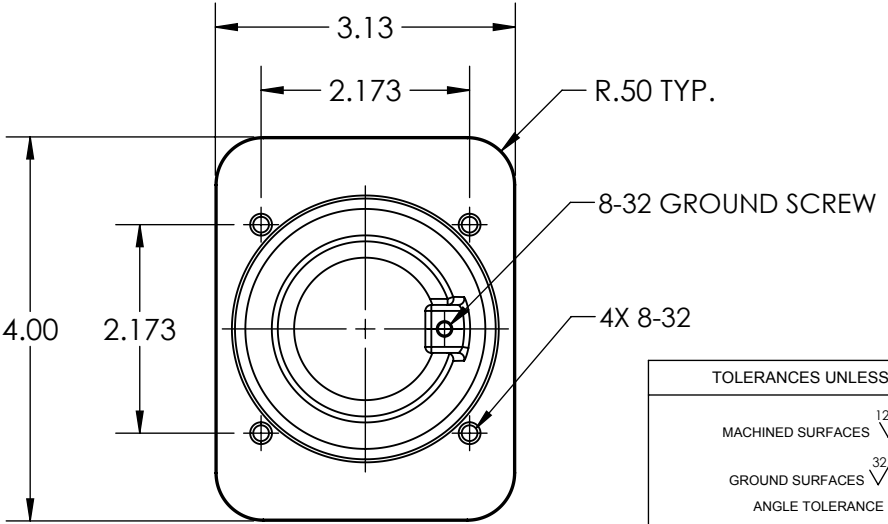


3.99



Ø 2.25

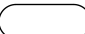
.19




R.50 TYP.

8-32 GROUND SCREW

4X 8-32

TOLERANCES UNLESS OTHERWISE SPECIFIED	
MACHINED SURFACES $\sqrt{125}$ MAX	<b>ENGLISH</b> 0.X ±0.05 0.XX ±0.01 0.XXX ±0.005
GROUND SURFACES $\sqrt{32}$ MAX	
ANGLE TOLERANCE ±1°	
REMOVE BURRS & SHARP EDGES TO .015 MAX.	
 DIMENSIONS SHOWN IN OVALS ARE INSPECTION DIMENSIONS.	

 A COMPANY OF MARICHAL ELECTRIC		DRAWING TITLE:	
		<b>STAINLESS STEEL HANDLE</b>	
DRAWN	APPROVED	DATE:	MATERIAL:
			<b>STAINLESS STEEL</b>
SHEET: 1 OF 1		PART NUMBER	
		<b>7X3PONxx</b>	
			REVISION