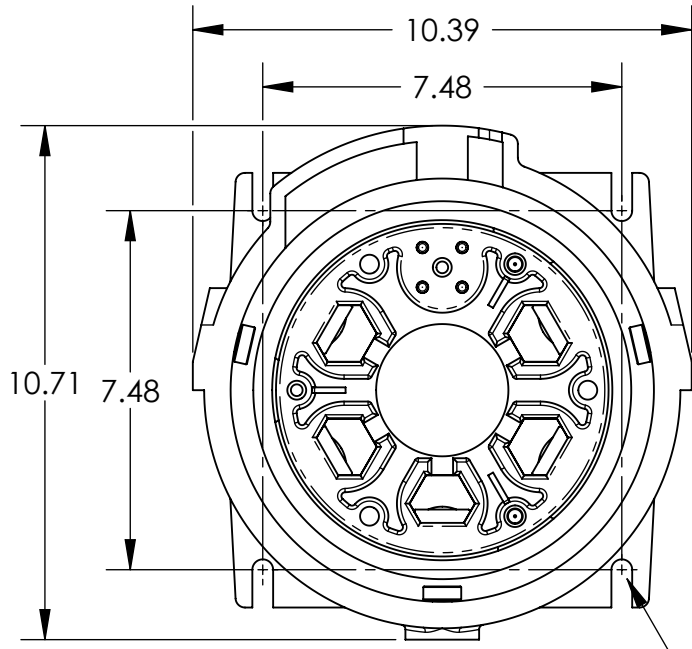
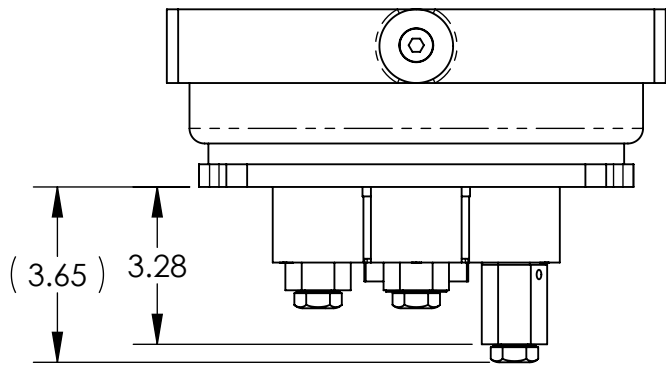
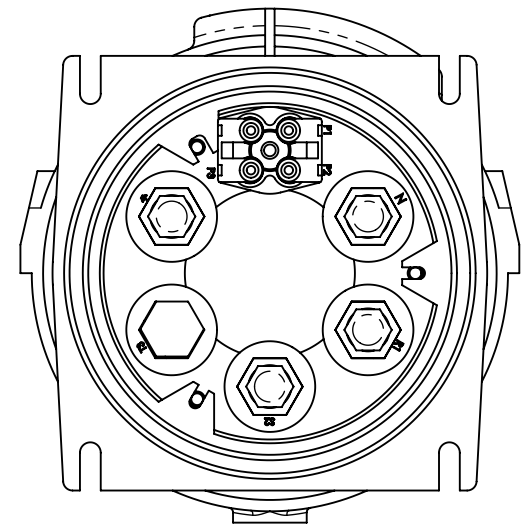
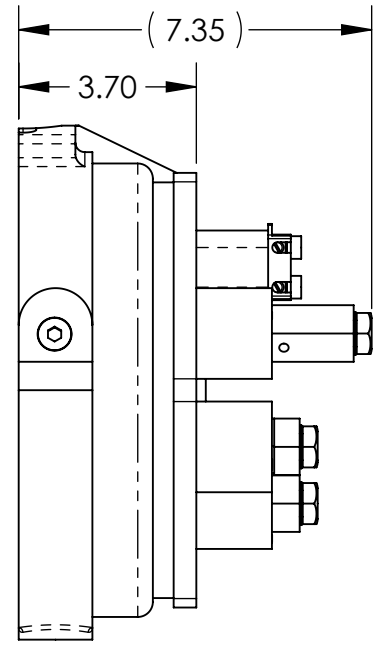


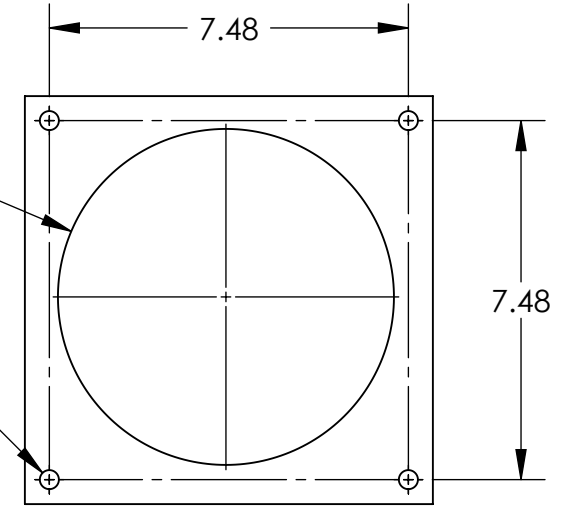
This drawing is the property of MELTRIC Corporation, Franklin (Milwaukee), Wisconsin, USA. Any unauthorized copying of this drawing by any means, ENG/RD/06 REV: 20 ISSUED DATE: 11/15/11 or disclosure of its contents to any person not authorized by MELTRIC Corporation or its agents to receive it, is strictly prohibited.



4X  $\phi$ .43



$\phi$ 7.00<sup>+0.13</sup><sub>-.00</sub>  
 4X  $\phi$  .40  
 (CLEARANCE HOLES FOR 3/8-16 BOLTS)



ENTRY HOLE PATTERN

APPROX WEIGHT = 15 LBS.

TOLERANCES UNLESS OTHERWISE SPECIFIED				<b>ENGLISH</b> 0.X $\pm$ 0.05 0.XX $\pm$ 0.01 0.XXX $\pm$ 0.005	
MACHINED SURFACES	$\sqrt[125]{\text{MAX}}$				
GROUND SURFACES	$\sqrt[32]{\text{MAX}}$	DATE:		SCALE	
ANGLE TOLERANCE	$\pm 1^\circ$	DRAWING TITLE:		PART NUMBER	
REMOVE BURRS & SHARP EDGES TO .015 MAX.		PF600 INLET		MATERIAL:	
		SHEET:		REVISION	
		1 OF 1		49-68xxx	
DIMENSIONS SHOWN IN OVALS ARE INSPECTION DIMENSIONS.					