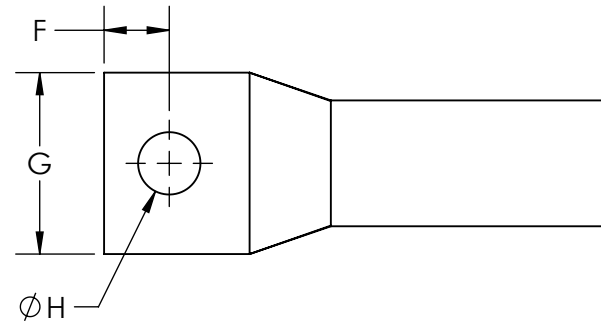
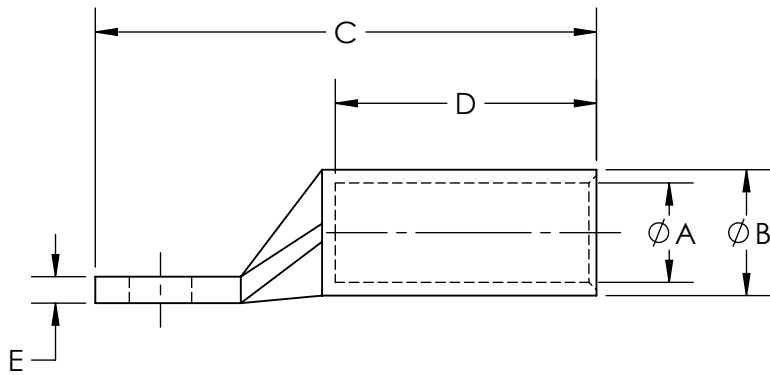
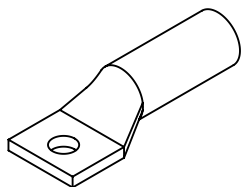


This drawing is the property of MELTRIC Corporation, Franklin (Milwaukee), Wisconsin, USA. Any unauthorized copying of this drawing by any means, ENG/RD/06 REV: 21 ISSUED DATE: 10/7/16 or disclosure of its contents to any person not authorized by MELTRIC Corporation or its agents to receive it, is strictly prohibited.



FOR USE WITH ANGLED HANDLE ACCESSORY

PART NUMBER	WIRE SIZE	Ø A	Ø B	C	D	E	F	G	Ø H
PFLUG4	4 AWG	.250	.343	2.616	.875	.085	.546	.999	.562
PFLUG3	3 AWG	.275	.375	2.130	.625	.095	.546	.750	.562
PFLUG2	2 AWG	.312	.421	2.161	.625	.102	.546	.750	.562
PFLUG1	1 AWG	.359	.468	2.205	.625	.115	.546	.750	.562
PFLUG10	1/0 AWG	.390	.515	2.356	.750	.133	.546	.738	.562
PFLUG20	2/0 AWG	.437	.562	2.396	.750	.122	.546	.811	.562
PFLUG30	3/0 AWG	.484	.609	2.439	.750	.134	.546	.885	.562
PFLUG40	4/0 AWG	.546	.687	2.616	.875	.145	.546	.999	.562
PFLUG250	250kcmil	.593	.750	2.844	1.063	.160	.546	1.088	.562
PFLUG300	300kcmil	.660	.812	2.900	1.063	.154	.546	1.189	.562
PFLUG350	350kcmil	.703	.890	2.936	1.063	.191	.546	1.291	.562
PFLUG400	400kcmil	.750	.937	3.105	1.188	.187	.546	1.365	.562
PFLUG500	500kcmil	.828	1.062	3.282	1.300	.234	.414	1.535	.562
PFLUG600	600kcmil	.920	1.187	3.434	1.375	.267	.546	1.712	.562
PFLUG650	650kcmil	.958	1.217	3.494	1.375	.305	.546	1.764	.562



TOLERANCES UNLESS OTHERWISE SPECIFIED		 MELTRIC A COMPANY OF MARÉCHAL ÉLECTRIC	
MACHINED SURFACES $\sqrt[125]{\text{MAX}}$ GROUND SURFACES $\sqrt[32]{\text{MAX}}$ ANGLE TOLERANCE $\pm 1^\circ$ REMOVE BURRS & SHARP EDGES TO .015 MAX.	ENGLISH 0.X ± 0.05 0.XX ± 0.01 0.XXX ± 0.005		
DIMENSIONS SHOWN IN OVALS ARE INSPECTION DIMENSIONS.	DRAWN: WF APPROVED: [Signature]	DRAWING TITLE: PF/PFQ 300-600 AMP STRAIGHT BARREL LUG	
	DATE: 11/26/2019 SHEET: 1 OF 1	SCALE: NTS MATERIAL: COPPER - ELETRO TIN PLATED PART NUMBER: PFLUGxxx	REVISION: