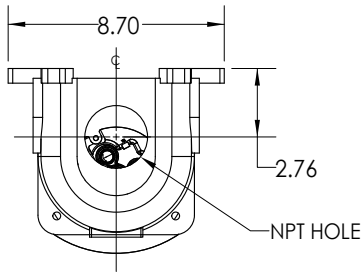
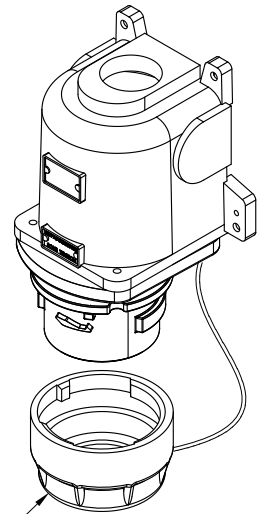


This drawing is the property of MELTRIC Corporation, Franklin, (Milwaukee), Wisconsin, USA. Any unauthorized copying of this drawing by any means, or disclosure of its contents to any person not authorized by MELTRIC Corporation or its agents to receive it, is strictly prohibited. ENG/RD/06 REV. 20 ISSUED DATE: 11/15/11

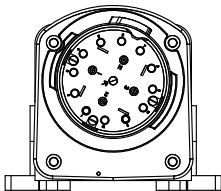
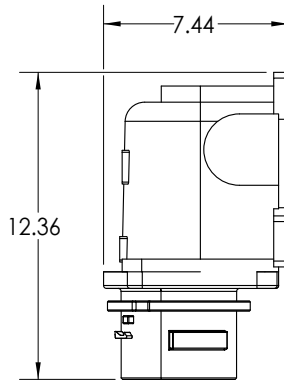
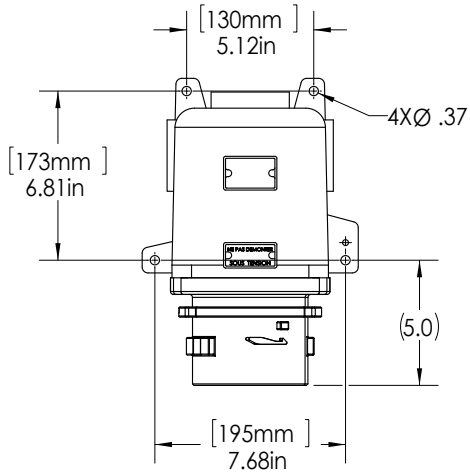
G | F | E | D | C | B | A



PART NUMBER	NPT SIZE
26-66xxx-1	1" NPT
26-66xxx-114	1-1/4" NPT
26-66xxx-112	1-1/2" NPT
26-66xxx-2	2" NPT



SUPPLIED WITH INLET CAP ATTACHED TO INLET BASE WITH LANYARD.



TOLERANCES UNLESS OTHERWISE SPECIFIED		 A COMPANY OF MARECHAL ELECTRIC		DRAWING TITLE:	
MACHINED SURFACES $\sqrt{125}$ MAX GROUND SURFACES $\sqrt{32}$ MAX ANGLE TOLERANCE $\pm 1^\circ$ REMOVE BURRS & SHARP EDGES TO .015 MAX.	ENGLISH 0.X ± 0.05 0.XX ± 0.01 0.XXX ± 0.005			DRAWN: _____ APPROVED: _____ DATE: _____	DX 60A INLET W/CAP ON BOX
DIMENSIONS SHOWN IN OVALS ARE INSPECTION DIMENSIONS.		SCALE: NTS	MATERIAL: METAL CASING AND BOX		
		SHEET: 1 OF 1	PART NUMBER: 26-66xxx-xx	REVISION: _____	